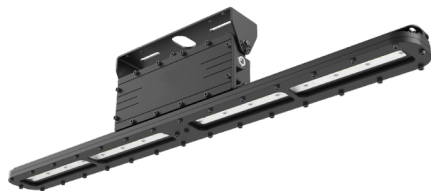


Catalog Number	
Notes	Type

HEXS

Explosion Proof LED Linear



FEATURES

- High Lumen output up to 120 Lm/W
- Shock and Vibration resistant
- Thermal Shock and impact resistant lens
- Mounting: Wall (Standard), Pole, Hanging, and Pendant
- Light weight compact design
- 30° Yoke Adjustments (180° total)

INTENDED USE

The HEXS is designed and listed for Cl D1 explosion, hazardous, marine and wet locations. This product is ideal for retrofitting High Pressure Sodium (HPS) and Metal Halide (MH) fixtures for increased energy savings and maintenance.

CONSTRUCTION

- Copper-free aluminum housing
- Silicone-free gaskets
- Powder coat black
- All exposed fasteners are stainless steel
- Thermal shock and impact resistant glass lens
- Three 3/4" Hub locations
- Weights: 2Ft.-16 lbs. / 4Ft.-24 lbs.

ELECTRICAL

- 120-277 / 347-480VAC
- 10Kv surge protector built in - Standard
- 3Ft. 3-Wire whip standard, factory installed

LISTINGS

- UL844 / CSA-C22.2 No.137 (Hazardous)
 - Cl D1 Grps C,D
 - Cl D2 Grps A,B,C,D
 - Simultaneous Presence
 - Paint Spray Listed
 - T-Code: Cl D1=T6
- -40°C to 60°C Ambient
- RH Ambient Humidity 10% to 90%
- UL1598 / CSA-C22.2 No.250 (Wet/Damp)
- UL1598A (Marine Outside)
- Lumen Maintenance (L70) >60,000 hrs. (reported)
- IP66
- NEMA 3 and NEMA 4X
- FCC

OPTICAL

- CRI >70
- Clear or diffused tempered glass lens options available
- Two distributions: NEMA Type 4 (60°) and Type VI (110°)
- Up to 130Lm/Watt
- Three available CCT: 3000K, 4000K and 5000K

Warranty

5-year limited warranty on the fixture. This is the only warranty provided and no other statements in this specification sheet create any warranty of any kind. All other express and implied warranties are disclaimed. Complete warranty terms located at: www.acuitybrands.com/support/warranty/terms-and-conditions

Note: Actual performance may differ as a result of end-user environment and application.

All values are design or typical values, measured under laboratory conditions at 25 °C.

The product images shown are for illustration purposes only and may not be an exact representation of the product.

Specifications subject to change without notice.

ORDERING INFORMATION

Example: HEXS L2 MV 4K T4M CL MISC

Series	LED Performance Package	Voltage	Color Temperature	Optics	Lens
HEXS	L2 4,480 nominal Lumens at 4000K CCT	MV Multiple voltage (120V - 277V)	3K 3000K CCT	T4M Type IV medium ‡	CL Clear glass lens
	L4 9,560 nominal Lumens at 4000K CCT	HV 347V/480V	4K 4000K CCT	T6M Type VI medium	FG Diffused glass lens
			5K 5000K CCT		MISC Mex

NOTE: ‡ indicates option chosen has ordering restrictions. Options are sorted alphanumerically.

Accessories: Order as separate catalog number.	
HEXSUB1	1-7/8" Pole mount Kit
HEXSUB2	2-3/8" Pole mount Kit
HEXSIBC	Hanging Mount Kit

‡ Option Value Ordering Restrictions & Notes	
Option value	Restriction
T4M	Available with CL lens option only.

Performance

Source	Voltage (VAC) 50/60Hz	Input Current (A)	Wattage (W)	CCT	Lumen Output* (Lm)	
					Clear Lens	Diffused Lens
L2	120-277	.33 - .14	40	3,000K	4440	3510
				4,000K	4480	3520
				5,000K	5040	3800
L4	120-277	.66 - .29	80	3,000K	9550	7600
				4,000K	9560	7520
				5,000K	10260	7750

*Nominal values

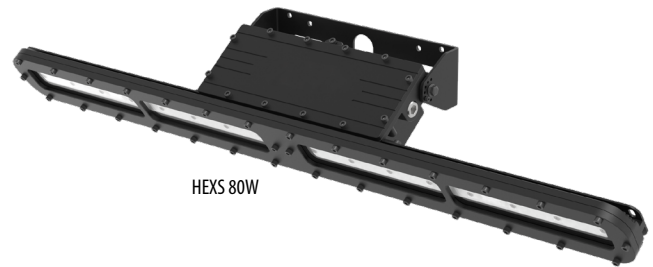


Clear Lens



Diffused Lens

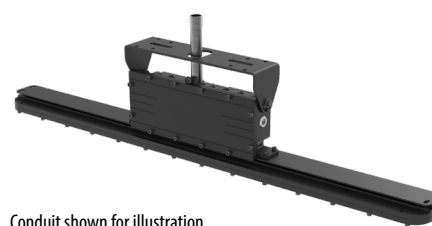
Accessories: Order separately, field installed	
Part Number	Description
HEXSUB1	Pole Mount Pipe Clamp Kit Stainless Steel 1-7/8" Dia. Includes: 2 Clamps
HEXSUB2	Pole Mount Pipe Clamp Kit Stainless Steel 2-3/8" Dia. Includes: 2 Clamps
HEXSIBC	Hanging Mount Kit Stainless Steel M10 Eyebolts and nuts Includes: 2 Eyebolts



HEXS 80W

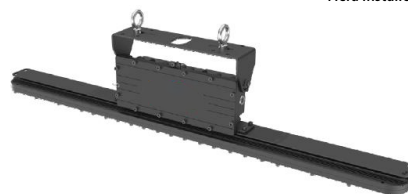
Note: Stainless steel accessories not for use in paint spray applications

SUGGESTED MOUNTING



Conduit shown for illustration purposes only

CEILING / WALL / PENDENT



HANGING

Hanging & Pole Mount Accessories
Field Installed. Order Separately



Pole shown for illustration purposes only

HEXSUB1 (1-7/8" Dia.)
HEXSUB2 (2-3/8" Dia.)

POLE

HEXS

Explosion Proof LED Linear

DIMENSIONS

