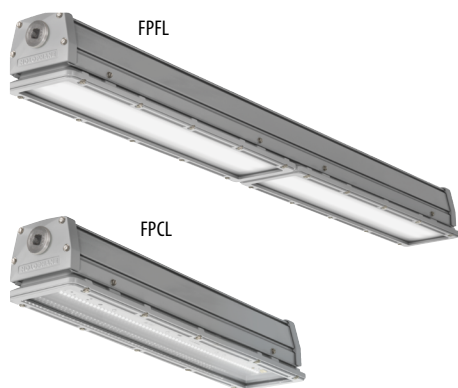


Catalog Number	
Notes	Type

Petrolux® EMX LED

Wet Location for Demanding Environments



FEATURES & SPECIFICATIONS

Certain airborne contaminants can diminish the integrity of acrylic and/or polycarbonate. [Click here for Acrylic/Polycarbonate Compatibility table for suitable use.](#)

Certain airborne contaminants may adversely affect the functioning of LEDs and other electronic components, depending on various factors such as concentrations of the contaminants, ventilation, and temperature at the end-user location. [Click here for a list of substances that may not be suitable for interaction with LEDs and other electronic components.](#)

ENCLOSED CONSTRUCTION:

- Cast & Extruded Aluminum - Polyester Powder Coated
- 18-8 Stainless Steel Hardware
- 304 Stainless steel mounting bracket
- Molded Silicone Gasketing
- 3/4" threaded NPT end-caps standard
- Corrosion resistant super durable TGIC thermoset powder coat finish is a five-stage pre-treating and painting process that yields over 5,000 hours salt rating per ASTM B117

OPTICS & LENS:

- Clear & Frosted Polycarbonate, .125" thick
- Clear & Frosted Tempered Glass, .125" thick

ELECTRICAL:

- MVOLT (120-277V)
- HVOLT (347-480V)
- 0-10V, 10% Dimming

INSTALLATION:

- Angle (wall or ceiling) with optional RMBA
- Pendant with PMP4X option (L24 only)
- Pole (1½" trade size pipe) with optional RMBU
- Surface (ceiling) with standard mounting bracket or optional RMBK
- Surface (wall) with optional RMBK
- Suspended (chain or cable) with standard mounting bracket or optional RMBK

LISTING & RATINGS:

- CSA Certified to meet US and Canadian standards
- Suitable for use in wet locations
- IP65, IP66, IP69K rated per IEC60529
- IP67 rated with optional gasket kit
- NEMA 4X rated
- Marine rated (UL1598A, US only)
- IK rated (see chart on page 6)
- 1G vibration rating with standard mounting bracket
- 3G vibration rating with optional rigid mount bracket (RMBK) per ANSI C136.31 (see "Option Value Ordering Restrictions and Notes" on page 3 for details)
- FCC Title 47, Part 15, Subpart B
- 10kV/6kA Surge Rated per ANSI C82.77-5-2015
- NSF Splash Zone 2 and Non-Food Zone rated (excludes RMBA option)
- -40°F (-40°C) to 158°F (70°C) ambient rating. (see chart on page 6)
- U.S. Patent No. D929015
- EPA L24 = 0.91 sq. ft. and L48 = 1.82 sq. ft.

DesignLights Consortium® (DLC) qualified product. Not all versions of this product may be DLC qualified. Please check the DLC Qualified Products List at www.designlights.org/QPL to confirm which versions are qualified.

BUY AMERICAN ACT — Product with the BAA option is assembled in the USA and meets the Buy America(n) government procurement requirements under FAR, DFARS and DOT regulations. Please refer to www.acuitybrands.com/buy-american for additional information.

WARRANTY — 5-year limited warranty. This is the only warranty provided and no other statements in this specification sheet create any warranty of any kind. All other express and implied warranties are disclaimed. Complete warranty terms located at: www.acuitybrands.com/support/warranty/terms-and-conditions

NOTE: Actual performance may differ as a result of end-user environment and application. All values are design or typical values, measured under laboratory conditions at 25 °C. The product images shown are for illustration purposes only and may not be an exact representation of the product. Specifications subject to change without notice.



Embed nLight controls today. Prepare for tomorrow.

Now	Tomorrow
User-friendly install	Scalability
Enhanced energy savings	Space configuration
Code compliance	Future-ready

A+ Capable Luminaire

This item is an A+ capable luminaire, which has been designed and tested to provide consistent color appearance and out-of-the-box control compatibility with simple commissioning.

- All configurations of this luminaire meet the Acuity Brands' specification for chromatic consistency
- This luminaire is part of an A+ Certified solution for nLight® control networks marked by a shaded background*

To learn more about A+, visit www.acuitybrands.com/aplus.

*See ordering tree for details

A+ Capable options indicated by this color background.

ORDERING INFORMATION

Lead times will vary depending on options selected. Consult with your sales representative.

Example: EMX L48 4000LM FPCL WD MVOLT GZ10 40K 80CRI MISC DWHXD CR

Series	Length	Nominal Lumens	Diffuser	Distribution	Voltage	Driver	Color temperature	CRI				
EMX	L24 24"	2000LM 2,000 lumens	FPCL Flat Poly Clear, .125" thick	MD Medium	MVOLT 120-277, 50/60hz	GZ10 0 - 10V dimming	30K 3000K	80CRI 80 CRI				
		3000LM 3,000 lumens							WD Wide	HVOLT 347-480V, 50/60hz	35K 3500K	90CRI 90 CRI
		4000LM 4,000 lumens										
		5000LM 5,000 lumens	FPFL Flat Poly Frost, .125" thick	PGD Parking Garage	120 120V, 50/60hz	40K 4000K	50K 5000K					
		6000LM 6,000 lumens										
		7000LM 7,000 lumens										
		8000LM 8,000 lumens	FGFL Flat Glass Frost, .125" thick	FGCL Flat clear glass, .125" thick	277 277V, 50/60hz	347 347V, 50/60hz	480 480V, 50/60hz					
		9000LM 9,000 lumens										
	L48 48"	4000LM 4,000 lumens	FPCL Flat Poly Clear, .125" thick	MD Medium	MVOLT 120-277, 50/60hz	GZ10 0 - 10V dimming	30K 3000K	80CRI 80 CRI				
		6000LM 6,000 lumens										
		8000LM 8,000 lumens										
		10000LM 10,000 lumens										
		12000LM 12,000 lumens										
		14000LM 14,000 lumens										
		15000LM 15,000 lumens										
		18000LM 18,000 lumens										
		24000LM 24,000 lumens										
		28000LM 28,000 lumens										

Options	Finish
<p>Emergency:</p> <p>E10WLC Power Sentry® PS1055MCP, 10W internal constant power emergency driver, 5°C min, UL924 Compliant, Certified in CA Title 20 MAEDBS (120-277) (LINK) ‡</p> <p>BE6WCP Cold Weather, 6W internal emergency driver, -20°C min, UL924 Compliant, Certified in CA Title 20 MAEDBS (120 or 277V) ‡</p> <p>Other Options:</p> <p>BAA Buy America(n) Act Compliant</p> <p>MISC Mex</p> <p>IDS Independent Driver System ‡</p> <p>IP67 Semi-submersible gasket kit ‡</p> <p>PMP4X Pendant monopoint (L24 only) ‡</p> <p>RMBA Angled rigid mount bracket ‡</p> <p>RMBK Rigid mount bracket ‡</p> <p>RMBU Rigid mount U-bolt ‡</p> <p>SPD20KV 20kV Surge Protection Device 120V-277V ‡</p> <p>SPD20KVH 20kV Surge Protection Device 347V-480V ‡</p>	<p>Finish</p> <p>DGXD CR Grey, Super durable, corrosion resistant</p> <p>DWHXD CR White, Super durable, corrosion resistant</p> <p>DBLXD CR Black, Super durable, corrosion resistant</p>
<p>Cordsets:</p> <p>CPSB16YWL Brad Harrison® Mini-Change® cordset with male connector, 16 gauge, 3 conductors, yellow, 6 foot ‡</p> <p>CPSB16YWL12FT Brad Harrison® Mini-Change® cordset with male connector, 16 gauge, 3 conductors, yellow, 12 foot ‡</p> <p>CNP16WWL Cord only (no plug), 16 gauge, 3 conductors, white, 6ft ‡</p> <p>CNP16WWL12FT Cord only (no plug), 16 gauge, 3 conductors, white, 12ft ‡</p> <p>CNP165CDWWL Cord only (no plug), 16 gauge, 5 conductors, includes 0-10V dimming leads, white, 6ft ‡</p> <p>CNP164CWWL Cord only (no plug), 16 gauge, 4 conductors, white, 6ft ‡</p>	<p>Individual Sensors: ‡</p> <p>SBGR10 360° Low Mount Sensor, (8-15' mounting heights), on/off occupancy (LINK)</p> <p>SBGR10 D 3V 360° Low Mount sensor, (8-15' mounting heights), high/low occupancy dimming (bi-level) (LINK)</p> <p>SBGR10 P 360° Low Mount Sensor, (8-15' mounting heights), on/off photocell (LINK)</p> <p>nLight® Air Wireless:</p> <p>NLTAIR2 RIO nLight® Air Generation 2, fixture embedded network interface, 0-10V dimming output (LINK) ‡</p> <p>NLTAIR2 RSBG6 nLight® Air Generation 2, 360° high mount sensor, (15-30' mounting heights) (LINK) ‡</p> <p>NLTAIR2 RSBG10 nLight® Air Generation 2, 360° low mount sensor, (8-15' mounting heights) (LINK) ‡</p>

NOTE: ‡ indicates option chosen has ordering restrictions. Please reference ordering restrictions chart.

Accessories: Order as separate catalog number.			
EMXRMBK	Rigid mount bracket (QTY of 1) ‡	EMXRMB	Angle mount bracket (QTY of 2) ‡
EMXRMBK L24 3G	Rigid mount bracket kit for (L24) 2' fixtures (QTY of 2) ‡	EMXRMBU	Rigid mount U-bolt bracket (QTY of 2) ‡
EMXRMBK L48 3G	Rigid mount bracket kit for (L48) 4' fixtures (QTY of 3) ‡	EMXSMB	Replacement standard mounting brackets (QTY of 2) ‡

Option value ordering restrictions and accessories are on page 3.

Option Value Ordering Restrictions & Notes	
Option value	Restriction
BE6WCP	Only available in 120V or 277V. Ambient limited to 35°C. Not available in L24 8000LM - 9000LM OR L48 15000LM- 28000LM. Utilizes BSL36 Cold EM driver.
CPSB16YWL	Not available with E10WLCP or BE6WCP. Utilizes cordset part number: 103002A01F0702. Not NEMA4X rated.
CPSB16YWL12FT	Not available with E10WLCP or BE6WCP. Utilizes cordset part number: 103002A01F1302. Not NEMA4X rated.
CNP16WWL, CNP16WWL12FT	Not available with E10WLCP or BE6WCP. Not NEMA4X rated.
CNP165CDWWL	Not available with E10WLCP or BE6WCP. Not available with controls. Not NEMA4X rated.
CNP164CWLL	Only available with E10WLCP or BE6WCP. Not NEMA4X rated.
E10WLCP	Only available with MVOLT. Ambient limited to 35°C. Not available in L24 8000LM - 9000LM OR L48 15000LM- 28000LM. Utilizes Power Sentry® PS1055LCP EM driver.
EMXR MBA	Available for surface angle (wall or ceiling) mounting applications. Bracket can be set to 22.5°, 45° or 90° angles. Not NSF rated.
EMXR MBK	QTY of 1 RMBK bracket for replacement or add a third bracket for L48 3G vibration rated applications. A minimum QTY of 2 brackets are required to mount a fixture. For 3G vibration rated applications, a QTY of 2 brackets is required for L24 (2FT) and a QTY of 3 brackets is required for L48 (4FT). Available for surface (ceiling or wall) and suspended (chain or cable) mounting applications.
EMXR MBK L24 3G	QTY of 2 brackets for L24 (2FT). Available for surface (ceiling or wall) and suspended (chain or cable) mounting applications. 3G vibration rated.
EMXR MBK L48 3G	QTY of 3 brackets for L48 (4FT). Available for surface (ceiling or wall) and suspended (chain or cable) mounting applications. 3G vibration rated.
EMXR MBU	Available for pole (1½" trade size pipe) mounting applications.
EMXS MB	Included with every fixture unless a different mounting option is chosen (R MBA, R MBK or R MBU). Available for surface (ceiling or wall) and suspended (chain or cable) mounting applications.
IDS	Not available with individual controls or nLight® Air Wireless. Each 24" section of a L48 fixture will have a separate driver and LED board that can be controlled independently.
Individual Sensors	Not available with IP67 option. IP66 rated. Not NEMA4X rated.
IP67	Not available with individual controls or nLight® Air Wireless. Not IP67 rated if fixture is mounted facing upward as water can pool on the lens.
NLTAIR2 RIO	Not available with HVOLT, 347 or 480 with 2000LM or 3000LM. Not available with IP67 option. IP66 rated. Not NEMA4X rated.
NLTAIR2 RSBG6, NLTAIR2 RSBG10	Not available with HVOLT, 347 or 480 with 2000LM or 3000LM. Not available with IP67 option. IP66 rated. Not NEMA4X rated.
PMP4X	Not available with BE6WCP or E10WLCP battery options or with any sensors.
R MBA	Available for surface angle (wall or ceiling) mounting applications. Bracket can be set to 22.5°, 45° or 90° angles. Not NSF rated.
R MBK	A QTY of 2 brackets will be included for L24 (2FT) and a QTY of 3 brackets will be included for L48 (4FT). Available for surface (ceiling or wall) and suspended (chain or cable) mounting applications. 3G vibration rated.
R MBU	Available for pole (1½" trade size pipe) mounting applications.
SPD20KV	Not available in HVOLT.
SPD20KVH	Not available in MVOLT.

EMERGENCY LUMEN OUTPUT

How to Estimate Delivered Lumens in Emergency Mode
 Use the formula below to estimate the delivered lumens in emergency mode
Delivered Lumens = P x LPW
 P = Output power of emergency driver.
 LPW = Lumen per watt rating of the luminaire. (See charts on Page 6)
 The LPW rating is also available at [Designlight Consortium](#).

P = 10 watts for E10WLCP
 P = 6 watts for BE6WCP

EMERGENCY LUMEN OUTPUT EXAMPLE – 10 WATT BATTERY

Approximate Luminaire Efficacy	Approximate Lumens at 1 Minute	Approximate Lumens at 45 Minutes	Approximate Lumens at 90 Minutes
100 LPW	1000	1000	1000
110 LPW	1100	1100	1100
120 LPW	1200	1200	1200
130 LPW	1300	1300	1300
140 LPW	1400	1400	1400
150 LPW	1500	1500	1500

OPERATIONAL DATA (80 CRI*, MD, DWH***)**

Length	Package	Input Wattage	CCT	FPCL	FPFL	FGCL	FGFL
				Lumens (LPW)	Lumens (LPW)	Lumens (LPW)	Lumens (LPW)
L24	2000LM	13.7	30K	1911 (139)	1478 (108)	1922 (140)	1659 (121)
			35K	1949 (142)	1508 (110)	1961 (143)	1693 (124)
			40K	2132 (156)	1649 (120)	2145 (157)	1852 (135)
			50K	2066 (151)	1598 (117)	2078 (152)	1794 (131)
	3000LM	20.0	30K	2862 (143)	2214 (110)	2879 (144)	2485 (124)
			35K	2920 (146)	2259 (113)	2937 (147)	2536 (126)
			40K	3193 (159)	2470 (123)	3212 (160)	2773 (138)
			50K	3094 (154)	2393 (119)	3112 (155)	2687 (134)
	4000LM	27.5	30K	3851 (140)	2979 (108)	3874 (141)	3345 (121)
			35K	3929 (143)	3040 (110)	3953 (144)	3413 (124)
			40K	4298 (156)	3325 (121)	4324 (157)	3733 (136)
			50K	4164 (151)	3221 (117)	4189 (152)	3616 (131)
	5000LM	33.2	30K	4670 (141)	3613 (109)	4698 (141)	4056 (122)
			35K	4765 (143)	3686 (111)	4793 (144)	4138 (125)
			40K	5211 (157)	4032 (121)	5243 (158)	4526 (136)
			50K	5049 (152)	3906 (118)	5079 (153)	4385 (132)
	6000LM	39.6	30K	5535 (140)	4282 (108)	5568 (140)	4807 (121)
			35K	5648 (142)	4369 (110)	5681 (143)	4905 (124)
			40K	6177 (156)	4779 (120)	6214 (157)	5365 (135)
			50K	5985 (151)	4630 (117)	6020 (152)	5198 (131)
	7000LM	46.3	30K	6304 (136)	4877 (105)	6342 (137)	5475 (118)
			35K	6432 (139)	4976 (107)	6470 (140)	5586 (121)
			40K	7035 (152)	5442 (118)	7077 (153)	6110 (132)
			50K	6815 (147)	5272 (114)	6856 (148)	5919 (128)
	8000LM	54.5	30K	7311 (134)	5656 (104)	7355 (135)	6349 (117)
			35K	7459 (137)	5770 (106)	7504 (138)	6478 (119)
			40K	8158 (150)	6311 (116)	8207 (151)	7086 (130)
			50K	7904 (145)	6115 (112)	7951 (146)	6865 (126)
9000LM	62.5	30K	8234 (132)	6370 (102)	8283 (133)	7151 (114)	
		35K	8401 (134)	6499 (104)	8451 (135)	7296 (117)	
		40K	9189 (147)	7108 (114)	9244 (148)	7980 (128)	
		50K	8902 (142)	6887 (110)	8956 (143)	7732 (124)	

* For 90CRI, reduce lumen output by 17.5%

** For WD reduce output by 5.9%, PGD reduce output by 10.8%

*** For DG reduce output by 7.1%, DBL reduce output by 11.4%

OPERATIONAL DATA (80 CRI*, MD, DWH***)**

Length	Package	Input Wattage	CCT	FPCL	FPFL	FGCL	FGFL
				Lumens (LPW)	Lumens (LPW)	Lumens (LPW)	Lumens (LPW)
L48	4000LM	27.2	30K	3835 (141)	2967 (109)	3858 (141)	3331 (122)
			35K	3913 (144)	3027 (111)	3936 (144)	3398 (125)
			40K	4280 (157)	3311 (121)	4305 (158)	3717 (136)
			50K	4146 (152)	3208 (118)	4171 (153)	3601 (132)
	6000LM	39.5	30K	5598 (142)	4331 (110)	5632 (143)	4862 (123)
			35K	5712 (145)	4419 (112)	5746 (145)	4961 (126)
			40K	6247 (158)	4833 (122)	6285 (159)	5426 (137)
			50K	6053 (153)	4682 (118)	6089 (154)	5257 (133)
	8000LM	53.4	30K	7396 (139)	5722 (107)	7441 (139)	6424 (120)
			35K	7546 (141)	5838 (109)	7592 (142)	6554 (123)
			40K	8254 (155)	6385 (120)	8303 (156)	7168 (134)
			50K	7997 (150)	6186 (116)	8044 (151)	6945 (130)
	10000LM	66.6	30K	9476 (142)	7331 (110)	9533 (143)	8230 (124)
			35K	9669 (145)	7480 (112)	9727 (146)	8397 (126)
			40K	10575 (159)	8181 (123)	10638 (160)	9184 (138)
			50K	10245 (154)	7926 (119)	10307 (155)	8898 (134)
	12000LM	76.2	30K	10766 (141)	8329 (109)	10831 (142)	9350 (123)
			35K	10985 (144)	8498 (112)	11050 (145)	9540 (125)
			40K	12014 (158)	9294 (122)	12086 (159)	10434 (137)
			50K	11640 (153)	9005 (118)	11710 (154)	10109 (133)
	14000LM	90.0	30K	12570 (140)	9724 (108)	12645 (140)	10917 (121)
			35K	12825 (142)	9921 (110)	12901 (143)	11138 (124)
			40K	14027 (156)	10851 (121)	14111 (157)	12182 (135)
			50K	13590 (151)	10513 (117)	13671 (152)	11803 (131)
	15000LM	97.6	30K	13418 (137)	10381 (106)	13499 (138)	11654 (119)
			35K	13691 (140)	10591 (108)	13773 (141)	11890 (122)
			40K	14974 (153)	11584 (119)	15064 (154)	13005 (133)
			50K	14507 (149)	11223 (115)	14594 (149)	12600 (129)
	18000LM	121.8	30K	16070 (132)	12432 (102)	16166 (133)	13957 (115)
			35K	16396 (135)	12684 (104)	16494 (135)	14240 (117)
			40K	17933 (147)	13873 (114)	18040 (148)	15575 (128)
			50K	17374 (143)	13441 (110)	17478 (143)	15089 (124)
	24000LM	167.1	30K	22395 (134)	17325 (104)	22529 (135)	19450 (116)
			35K	22850 (137)	17677 (106)	22987 (138)	19845 (119)
			40K	24992 (150)	19334 (116)	25141 (151)	21706 (130)
			50K	24213 (145)	18732 (112)	24358 (146)	21029 (126)
	28000LM	210.5	30K	25302 (120)	19574 (93)	25454 (121)	21975 (104)
			35K	25816 (123)	19971 (95)	25970 (123)	22421 (107)
			40K	28236 (134)	21844 (104)	28405 (135)	24523 (117)
			50K	27356 (130)	21163 (101)	27519 (131)	23759 (113)

* For 90CRI, reduce lumen output by 17.5%

** For WD reduce output by 5.9%, PGD reduce output by 10.8%

*** For DG reduce output by 7.1%, DBL reduce output by 11.4%

LAT TABLE

Ambient Temp °C	L24								L48									
	2000LM	3000LM	4000LM	5000LM	6000LM	7000LM	8000LM	9000LM	4000LM	6000LM	8000LM	10000LM	12000LM	14000LM	15000LM	18000LM	24000LM	28000LM
25°C	1.00	1.00	1.00	1.00	1.00	1.00	1.00	1.00	1.00	1.00	1.00	1.00	1.00	1.00	1.00	1.00	1.00	1.00
30°C	0.99	0.99	0.99	0.99	0.99	0.99	0.99	0.99	0.99	0.99	0.99	0.99	0.99	0.99	0.99	0.99	0.99	0.99
35°C	0.99	0.99	0.99	0.99	0.99	0.99	0.98	0.98	0.99	0.99	0.98	0.98	0.98	0.98	0.98	0.98	0.98	0.98
40°C	0.98	0.98	0.98	0.98	0.98	0.98	0.98	0.98	0.98	0.98	0.98	0.98	0.98	0.98	0.98	0.98	0.98	0.97
45°C	0.97	0.97	0.97	0.97	0.97	0.97	0.97	0.97	0.97	0.97	0.97	0.97	0.97	0.97	0.97	0.97	NA	NA
50°C	0.96	0.96	0.96	0.96	0.96	0.96	0.96	0.96	0.96	0.96	0.96	0.96	0.96	0.96	0.96	0.96	NA	NA
55°C	0.96	0.96	0.96	0.96	0.95	0.95	0.95	0.95	0.96	0.95	0.95	0.95	0.95	0.95	0.95	0.95	NA	NA
60°C	0.95	0.95	0.95	0.95	0.95	0.95	0.95	0.95	0.95	0.95	0.95	0.95	0.95	0.95	0.94	0.94	NA	NA
65°C	0.94	0.94	0.94	0.94	0.94	NA	NA	NA	0.94	0.94	0.94	0.94	NA	NA	NA	NA	NA	
70°C	NA	NA	NA	NA	NA	NA	NA	NA	0.93	0.93	0.93	0.93	NA	NA	NA	NA	NA	

CSA LISTED AMBIENT RATING*

		Standard	E10WCP Battery	BE6WCP Battery	RSBG, RIO, SBGR Controls
L24	2000LM	65°C	5°C - 35°C	-20°C - 35°C	60°C
	3000LM	65°C	5°C - 35°C	-20°C - 35°C	60°C
	4000LM	65°C	5°C - 35°C	-20°C - 35°C	60°C
	5000LM	65°C	5°C - 35°C	-20°C - 35°C	60°C
	6000LM	65°C	5°C - 35°C	-20°C - 35°C	60°C
	7000LM	60°C	5°C - 35°C	-20°C - 35°C	60°C
	8000LM	60°C	-	-	60°C
	9000LM	60°C	-	-	60°C
L48	4000LM	70°C	5°C - 35°C	-20°C - 35°C	60°C
	6000LM	70°C	5°C - 35°C	-20°C - 35°C	60°C
	8000LM	70°C	5°C - 35°C	-20°C - 35°C	60°C
	10000LM	70°C	5°C - 35°C	-20°C - 35°C	60°C
	12000LM	60°C	5°C - 35°C	-20°C - 35°C	60°C
	14000LM	60°C	5°C - 35°C	-20°C - 35°C	60°C
	15000LM	60°C	5°C - 35°C	-20°C - 35°C	60°C
	18000LM	60°C	-	-	50°C
	24000LM	40°C	-	-	40°C
28000LM	40°C	-	-	40°C	

NUMBER OF BOARDS AND DRIVERS

Lumen package	fixture length	number of boards	number of drivers
2000LM	L24	1	1
3000LM		1	1
4000LM		1	1
5000LM		1	1
6000LM		1	1
7000LM		1	1
8000LM		1	1
9000LM		1	1
4000LM		L48	2
6000LM	2		1
8000LM	2		1
10000LM	2		1
12000LM	2		1
14000LM	2		1
15000LM	2		2
18000LM	2		2
24000LM	2		2
28000LM	2		2

*Minimum Ambient is -40°C unless noted

LUMEN MAINTENANCE*

		Operating Hours					
		0	15,000	30,000	45,000	60,000	100,000
L24	2000LM	100.0%	96.7%	94.1%	91.5%	88.9%	82.6%
	3000LM	100.0%	96.7%	94.1%	91.5%	88.9%	82.6%
	4000LM	100.0%	96.7%	94.1%	91.5%	88.9%	82.6%
	5000LM	100.0%	96.7%	94.1%	91.5%	88.9%	82.6%
	6000LM	100.0%	96.7%	94.1%	91.5%	88.9%	82.6%
	7000LM	100.0%	96.7%	94.1%	91.5%	88.9%	82.6%
	8000LM	100.0%	96.4%	93.8%	91.2%	88.7%	82.3%
	9000LM	100.0%	96.4%	93.8%	91.2%	88.7%	82.3%
L48	4000LM	100.0%	96.7%	94.1%	91.5%	88.9%	82.6%
	6000LM	100.0%	96.7%	94.1%	91.5%	88.9%	82.6%
	8000LM	100.0%	96.7%	94.1%	91.5%	88.9%	82.6%
	10000LM	100.0%	96.7%	94.1%	91.5%	88.9%	82.6%
	12000LM	100.0%	96.7%	94.1%	91.5%	88.9%	82.6%
	14000LM	100.0%	96.7%	94.1%	91.5%	88.9%	82.6%
	15000LM	100.0%	96.7%	94.1%	91.5%	88.9%	82.6%
	18000LM	100.0%	96.4%	93.7%	91.2%	88.6%	82.3%
	24000LM	100.0%	96.4%	93.7%	91.2%	88.6%	82.3%
28000LM	100.0%	95.4%	91.9%	88.5%	85.2%	77.1%	

*Data projected for 25°C ambient

IMPACT RESISTANCE (IK RATINGS)

Lens Type	Rating
Poly (FPFL/FPCL)	IK 10
Clear Glass (FGCL)	IK 08
Frosted Glass (FGFL)	IK 05

EMX LED

Low-Profile Enclosed and Gasketed



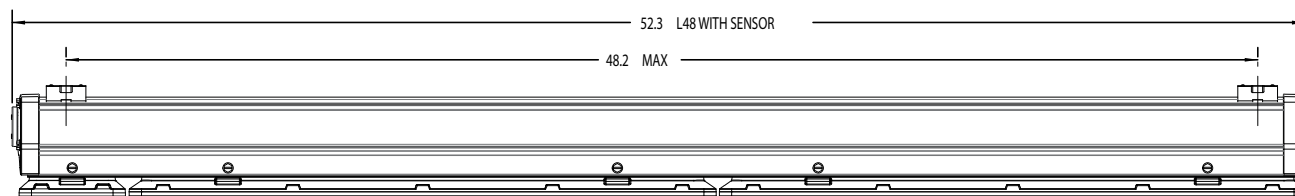
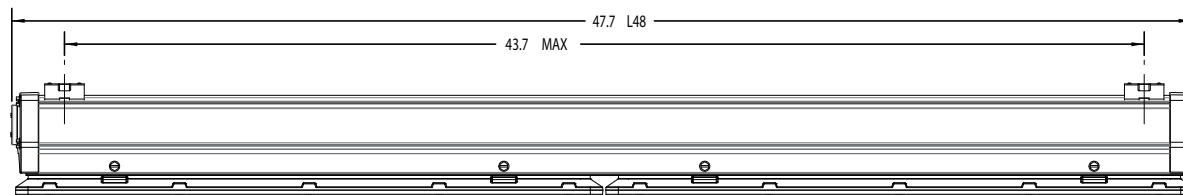
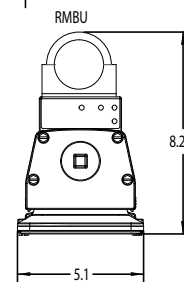
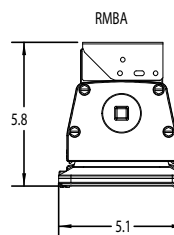
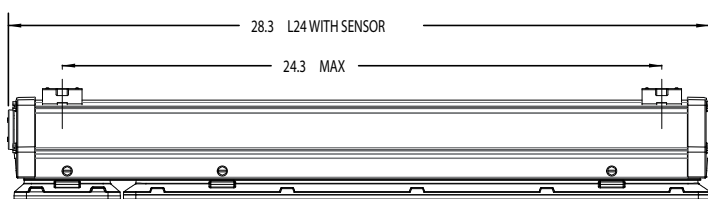
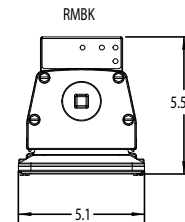
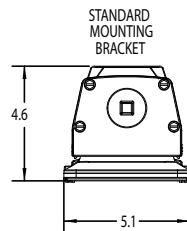
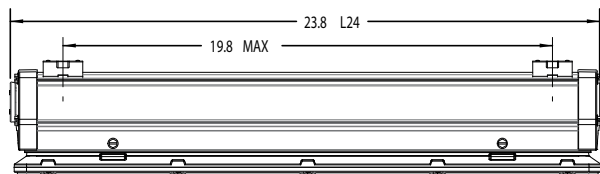
DIMENSIONS

Specifications subject to change without notice.
All dimensions are inches unless otherwise indicated.

CONFIGURATION WEIGHTS

	Standard	w/ Sensor	w/ Battery
L24	10.9 lbs	11.5 lbs	12.4 lbs
L48	19.4 lbs	20.0 lbs	20.9 lbs

Weight may vary with options and accessories



OPTIONS AND ACCESSORIES

Standard Mount Bracket



(ceiling, suspended)
Included with the fixture
unless one of the following 3
options are chosen.

RMBK Bracket



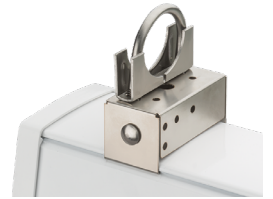
(ceiling, wall, suspended)
2' (L24) fixtures require 2
brackets and 4' (L48) fixtures
require 3 brackets for 3G
rating.

RMBA Bracket



(angled)
Bracket can be set to 22.5°,
45° or 90° angles.

RMBU Bracket



(pole)
1 1/2" Trade size Pipe mounting

CPSB16YWL Cordset



SBGR Sensor



R10 Control Module



RSBG Sensor

